

Medical Image Analysis (EE61008)


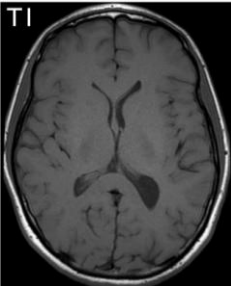
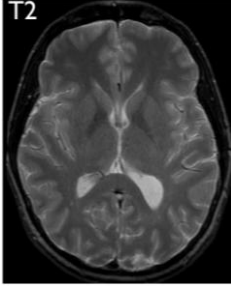


Assignment 2

Due: 13 Jan 2015, 2:30 - 3:00 PM, N232 Dept. of Electrical Engineering

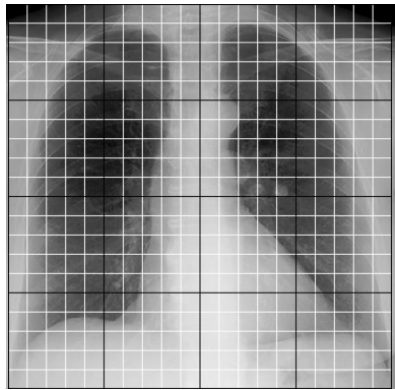
Type: Solve in class

Spring 2014-15

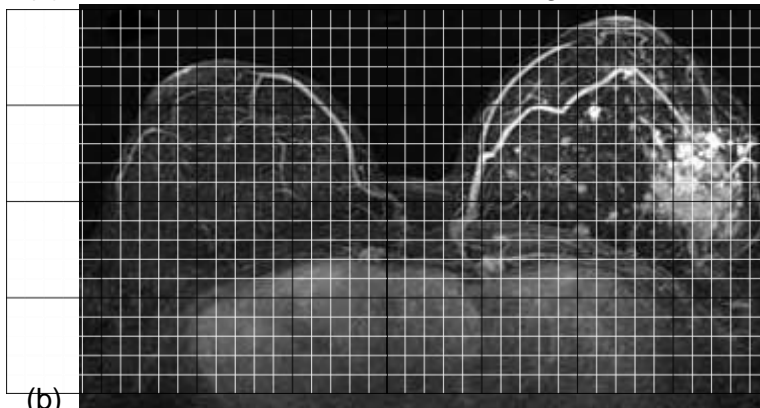
- Match the following images to the imaging modality and the imaged organ. Also mention the reason for this association.

	Image	Modality	Organ
(A)		(1) T1 Weighted MRI	(α) Brain
(B)		(2) X-Ray Computed Tomography	(β) Lungs
(C)		(3) Ultrasonography	(γ) Heart
(D)		(4) T2 Weighted MRI	(δ) Kidney
(E)		(5) SPECT	(ε) Liver

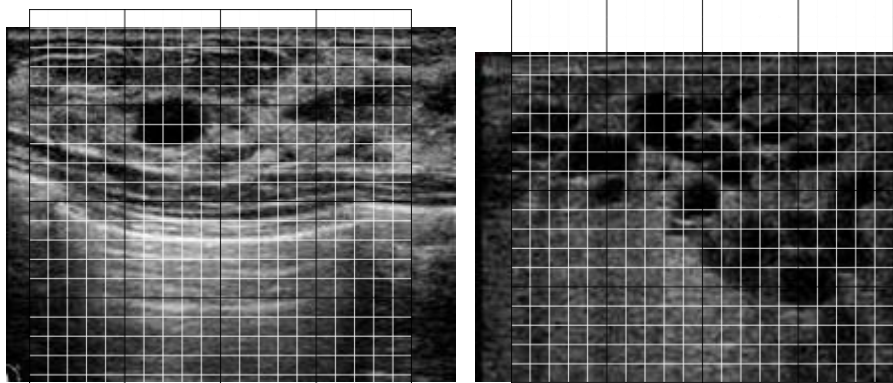
2. Identify the imaging modality, organ / anatomical location, mark the lesion (abnormality) and measure their sizes in the following images.



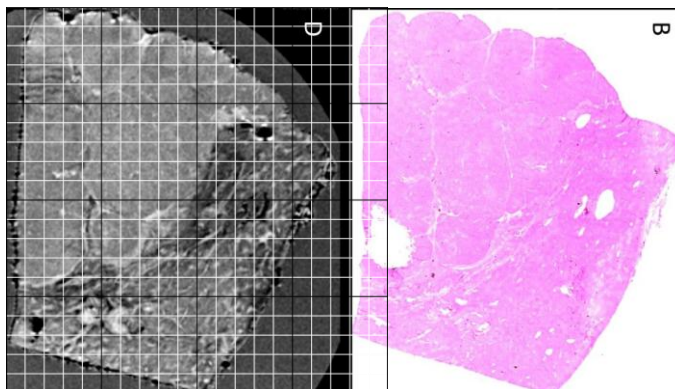
(a) Fine grid size = 2 cm x 2 cm



(b) Fine grid size = 1 cm x 1 cm



(c) Fine grid size = 2 mm x 2 mm



(d) Fine grid = 100μm